

AUTO EQUIPMENT SCHEDULE

TYPE MARK	DESCRIPTION
A-1	PARTS STORAGE RACK (N.I.C.)
A-2	PORTABLE EXHAUST
A-3	STOOLS - ROLLING CREEPER
A-4	WALL CABINETS
A-5	STANDING STORAGE CABINETS (N.I.C.)
A-6	TOOL CABINETS FIXED (N.I.C.)
A-7	TOOL CABINET ROLLING (N.I.C.)
A-8	FLAMMABLE STORAGE CABINET (N.I.C.)
A-9	MATERIAL STOCK RACK (N.I.C.)
A-10	COUNTER/BENCH (N.I.C.)
A-11	SHOP WORK TABLE (N.I.C.)
A-12	COMPUTER WORK STATIONS (PORTABLE)
A-13	OIL COLLECTION PAN/STAND
A-14	ENGINE STAND START UP
A-15	TRIPOD JACK STAND
A-16	BENCH VICE
A-17	ENGINE HOIST
A-18	TRANSMISSION JACK
A-19	FOLDING PLATFORM
A-20	ENGINE STAND
A-21	ROLLING TOOL CART (N.I.C.)
A-22	ROLLING BREAKDOWN TABLE
A-23	ROLLING JACK
A-24	COMPRESSOR (N.I.C.)
A-25A	2 POST LIFT
A-25B	2 POST LIFT
A-25C	2 POST LIFT - ELECTRIC VEHICLE
A-26	PORTABLE LIFT (N.I.C.)
A-27	4 POST ALIGNMENT LIFT (N.I.C.)
A-28	COIL UP COMPRESSED AIR LINES (OVERHEAD) (N.I.C.)
A-29	COIL UP POWER (OVERHEAD) (N.I.C.)
A-30	TIRE BREAKDOWN MACHINE
A-31	TIRE BALANCE MACHINE
A-31A	BENCH BRAKE LATHE
A-31B	ON-CAR BRAKE LATHE
A-31C	ADAS CALIBRATION PACKAGE
A-32	PARTS CLEANER SOLVENT TANK
A-33	SOLVENTS TUB AND WASTE COLLECTOR
A-34	BATTERY CHARGER
A-35	HAZARDOUS AND WASTE STORAGE
A-36	SHOP PRESS
A-37	BENCH MOUNTED TRAINERS
A-38	HAZARDOUS AND WASTE STORAGE
A-39	GENERATOR
A-40A	EV CHARGING STATION
A-40B	EV CHARGING STATION
A-41	EXHAUST HOSE REEL (OVERHEAD)
A-42	ROAD FORCE BALANCER

W+
WIGHTMAN
BENTON HARBOR
269.927.0100
KALAMAZOO
269.327.3532
ALEGAN
269.673.8465
ROYAL OAK
248.791.1371
www.gowightman.com

DLR GROUP
DLR Group
603 WEST WALKER DRIVE, SUITE 600
CHICAGO, IL 60608
www.dlrgroup.com
312.763.1044

IMEG
1100 WARRENVILLE ROAD
SUITE 400W
NAPERVILLE, IL 60563
www.imegcorp.com
630.527.2320

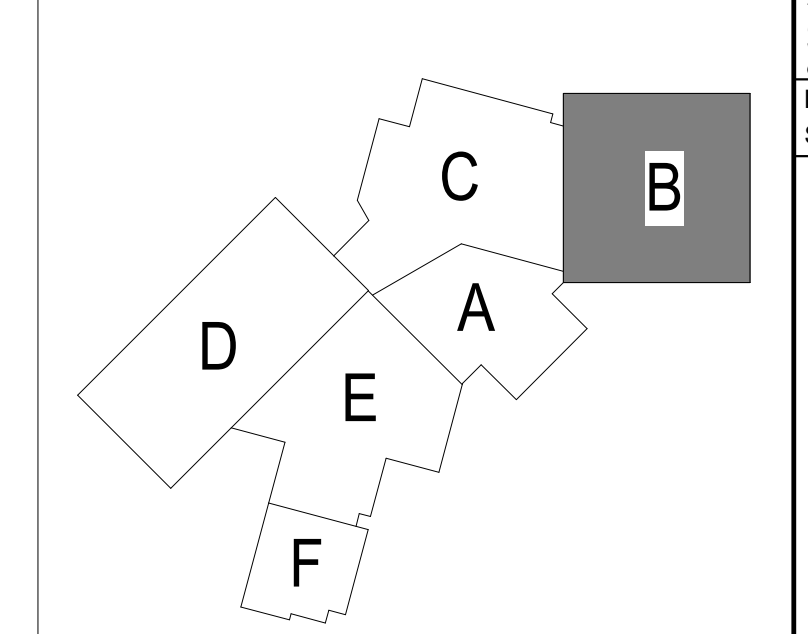
PROJECT NAME:
Career Connect Campus
CAREER CONNECT CAMPUS
3500 VANRICK DRIVE
KALAMAZOO, MI 49001

KALAMAZOO RESA
INSPIRING EDUCATIONAL EXCELLENCE
KALAMAZOO RESA
1819 EAST MILHAM ROAD
PORTAGE, MI 49002

ROOM SCHEDULE - AREA A1

RM. NO.	ROOM NAME	AREA	CEILING HT.
A000	VESTIBULE	344 SF	VARIES
A002	LOBBY	778 SF	VARIES
A100	CORRIDOR	71 SF	10'-0"
A100A	SRC	47 SF	9'-0"
A100C	TRANSPORTATION OFFICE	207 SF	10'-0"
A101	RECEPTION	296 SF	9'-6"
A102	STAFF LOUNGE	633 SF	10'-0"
A103	ADMIN	2299 SF	VARIES
A103A	STAFF RESTROOM	54 SF	9'-0"
A103B	STAFF RESTROOM	54 SF	9'-0"
A103C	PHONE ROOM	52 SF	10'-0"
A103D	LIT	32 SF	OPEN
A104	WAITING	571 SF	10'-0"
A104A	STUDENT WELLNESS	88 SF	10'-0"
A104B	STOR.	24 SF	10'-0"
A104C	COUNSELOR OFFICE	88 SF	10'-0"
A104D	COUNSELOR OFFICE	98 SF	10'-0"
A104E	COUNSELOR OFFICE	104 SF	VARIES
A104F	COUNSELOR OFFICE	101 SF	10'-0"
A104G	CONF	216 SF	10'-0"
EL101	ELEVATOR	75 SF	OPEN
S101	STAIR 1	232 SF	VARIES

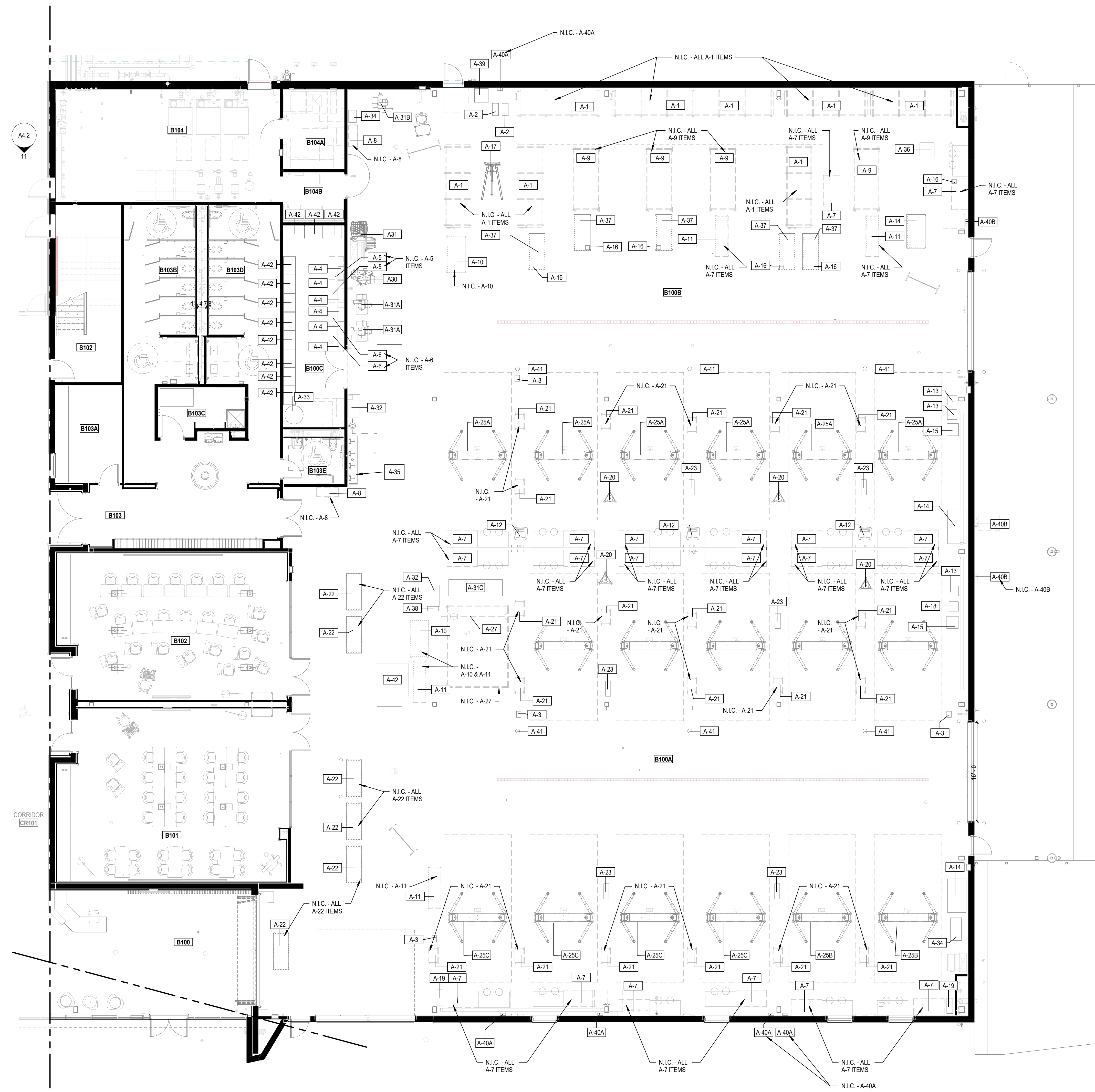
KEY PLAN



REVISIONS
15 Bulletin 12 07/17/2023
Confirmed Set 11/30/2023

FIRST FLOOR EQUIPMENT PLAN - AREA B

JOB NO. 214175
A15.1B



FIRST FLOOR EQUIPMENT PLAN - AREA B
SCALE: 1/8" = 1'-0"

ADVANCED MANUFACTURING EQUIPMENT LEGEND

ITEM NO.	DESCRIPTION
ADM-1	LATHE
ADM-2	BOX BENDER
ADM-3	BEND TESTER
ADM-4	UNIVERSAL PIPE BENDER
ADM-5	CNC MILL
ADM-6	ELLIS 9400 DRILL PRESS
ADM-7	ELLIS 1600 MITRE BAND SAW
ADM-8	PEDESTAL GRINDER
ADM-9	DEWALT CHOP SAW D28700
ADM-10	UNIFORMS PRO SE TON IRONWORKER
ADM-11	INDUSTRIAL WIRE RACKS
ADM-12	AIR COMPRESSOR (N.I.C.)
ADM-13	GRANITE SURFACE PLATE
ADM-14	ABS DIGIMATIC HEIGHT GAGE
ADM-15	PRECISION GRANITE STAND
ADM-16	SURFACE PLATE STAND w/ CASTERS
ADM-17	SURFACE GRINDER
ADM-18	5-AXIS MILLING MACHINE (N.I.C.)
ADM-19	ABS DIGIMATIC HEIGHT GAGE (N.I.C.)
ADM-20	PRECISION GRANITE STAND (N.I.C.)
ADM-21	SURFACE PLATE STAND w/ CASTERS (N.I.C.)
ADM-22	KEYBOARD (N.I.C.)
ADM-23	MOUSE (N.I.C.)
ADM-24	HEAVY DUTY TABLE

WELDING EQUIPMENT LEGEND

TYPE MARK	DESCRIPTION
W-1	WELDER - ALL TYPE
W-2	WELDER - ALL TYPE
W-3	WELDER - TIG
W-4	WELDER - MIG & FLUXCORE
W-5	WELDER - MULTI-PROCESS
W-6	WIRE FEEDER
W-7	FUME EXTRACTOR
W-8	PLASMA CUTTER
W-9	BENCH GRINDER
W-10	ELECTRODE OVEN
W-11	TRACK CUTTERS
W-12	STRAIGHT PIPE BEVELER
W-13	WELDING BOOTH
W-14	WELDING BOOTH TABLE
W-14B	WELDING BOOTH STAND
W-15	WIRE SHELF
W-16	QUENCH BASIN (N.I.C.)
W-17	ROBOTIC WELDER (N.I.C.)
W-18	CNC PLASMA CUTTER ADD ON MODULE (N.I.C.)
W-19	HEAVY DUTY TABLE

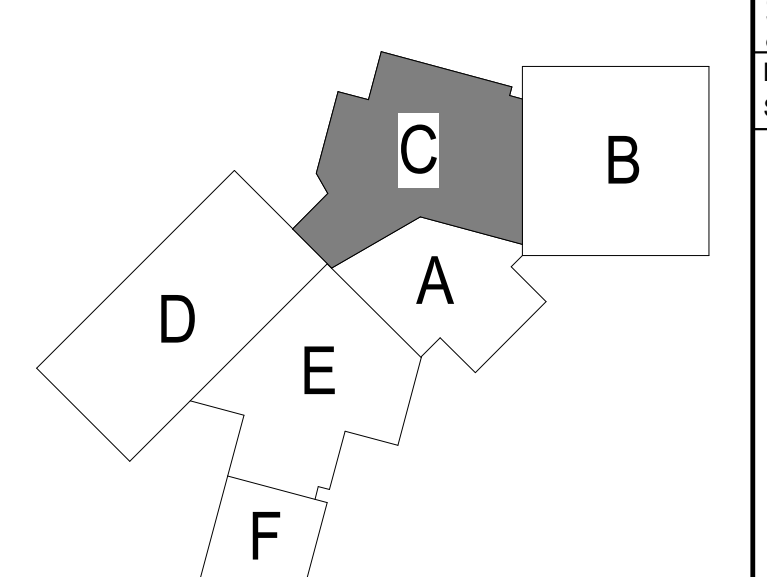
INFORMATION TECHNOLOGY EQUIPMENT SCHEDULE

TYPE MARK	DESCRIPTION
IT-1	NETWORK RACK (N.I.C.)
IT-2	SERVER RACK (N.I.C.)
IT-3	LABEL PRINTER (N.I.C.)
IT-4	LABEL PRINTER (N.I.C.)
IT-4A	BASIC NETWORK CABLE TESTER (N.I.C.)
IT-4B	FIREWALLS (N.I.C.)
IT-4C	ADVANCED NETWORK CABLE TESTER (INCL FIBER) (N.I.C.)
IT-4F	WIRELESS SPECTRUM ANALYZER (N.I.C.)
IT-5	COLOR LASER PRINTER (N.I.C.)
IT-7	DESKTOP PC (N.I.C.)
IT-7A	FLAT SCREEN MONITORS (N.I.C.)
IT-7B	CURVED MONITORS (N.I.C.)
IT-7C	USB MOUSE (N.I.C.)
IT-8	LAPTOP (N.I.C.)
IT-9	MOBILE TV CART (N.I.C.)
IT-9A	TV DISPLAYS (N.I.C.)
IT-10	TV DISPLAY (N.I.C.)
IT-11	SWITCH - 8 PORT (N.I.C.)
IT-12	WIRE SHELF
IT-13	WORKBENCH
IT-14	ROLLING TV/MONITOR CART (N.I.C.)

ROOM SCHEDULE - AREA C1

RM. NO.	ROOM NAME	AREA	CEILING HT.
C100	IT COMPUTER SYSTEMS	1287 SF	OPEN
C100A	IDP	55 SF	OPEN
C100B	STORAGE	78 SF	OPEN
C101	ADVANCED MANUFACTURING	5280 SF	VARIES
C101B	TOOL CRIB	356 SF	OPEN
C102	WELDING	3658 SF	OPEN
C102A	STORAGE	458 SF	OPEN
C103	CAQC	933 SF	10'-0"
C104	SIMULATED RESTAURANT	1059 SF	OPEN
C104A	OUTDOOR SEATING	2447 SF	NA
C105	CORRIDOR	243 SF	8'-0"
C105A	RESTROOM	334 SF	VARIES
C105B	RESTROOM	337 SF	VARIES
C105C	STOR	223 SF	OPEN
C105D	MOTHERS ROOM	129 SF	7'-6"
C105E	STAFF RESTROOM	47 SF	7'-6"
C105F	STAFF RESTROOM	48 SF	7'-6"
C106	CORRIDOR	183 SF	10'-0"
C106A	MDF	155 SF	OPEN
C107	MECH	753 SF	OPEN
C107A	ELECTRICAL	370 SF	OPEN
C107B	GENERATOR DISTRIBUTION ROOM	189 SF	OPEN
C107E	TRANSFORMER YARD	1137 SF	OPEN
C108	JAN	247 SF	OPEN
CR101	CORRIDOR	2505 SF	VARIES

KEY PLAN



W+
WIGHTMAN
BENTON HARBOR
269.927.0100
KALAMAZOO
269.327.3532
ALLEGAN
269.673.8465
ROYAL OAK
248.791.1371

DLR GROUP
DLR Group
303 WEST WALKER DRIVE, SUITE 600
CHICAGO, IL 60606
www.dlrgroup.com
312.785.1044

IMEG
1100 WARRENVILLE ROAD
SUITE 400W
NAPERVILLE, IL 60563
www.imegcorp.com
630.527.2320

PROJECT NAME:
CAREER CONNECT CAMPUS
3500 VANRICK DRIVE
KALAMAZOO, MI 49001

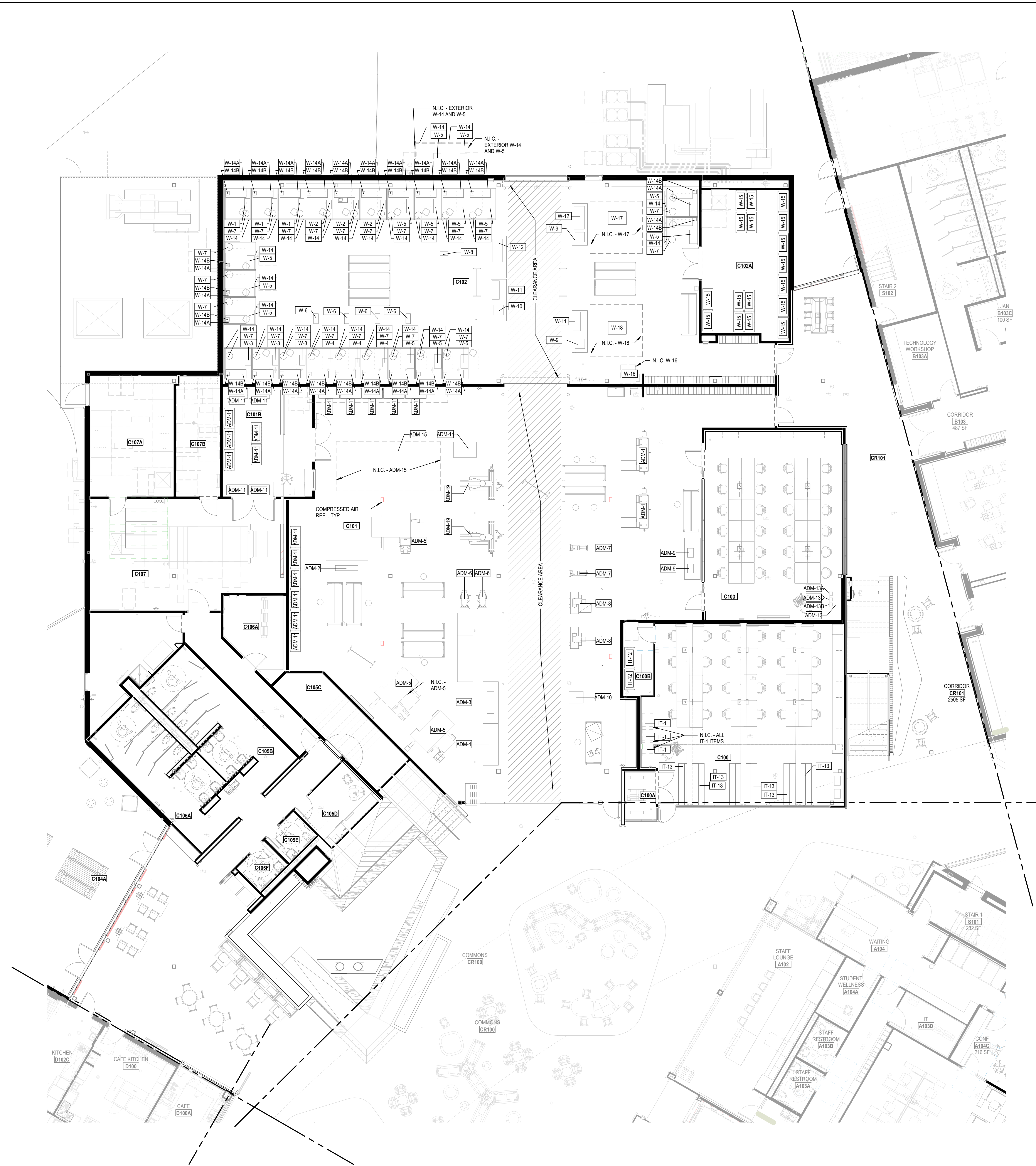
KALAMAZOO RESA
INSPIRING EDUCATIONAL EXCELLENCE
KALAMAZOO RESA
1819 EAST MILHAM ROAD
PORTAGE, MI 49002

Issued for Bid 12/20/2022
Issued For Plan 01/27/2023
Review 11/30/2023

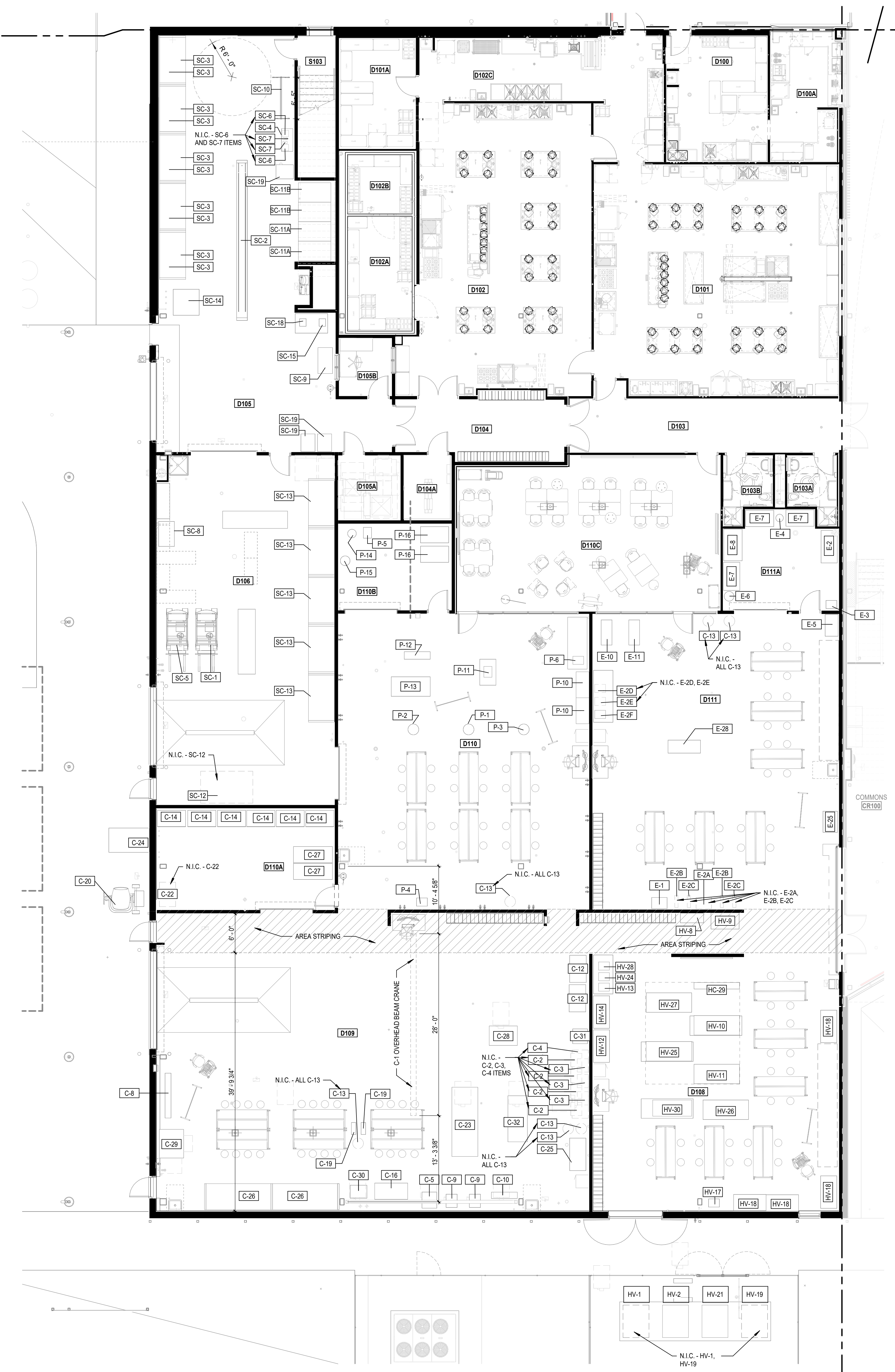
REVISIONS
THE REPRODUCTION, COPYING OR OTHER USE OF THIS DRAWING WITHOUT WRITTEN CONSENT IS PROHIBITED.
DATE: 20 DEC 22
SCALE: 1/8" = 1'-0"

FIRST FLOOR EQUIPMENT PLAN - AREA C

JOB NO: 214175
A15.1C



FIRST FLOOR EQUIPMENT PLAN - AREA C
SCALE: 1/8" = 1'-0"



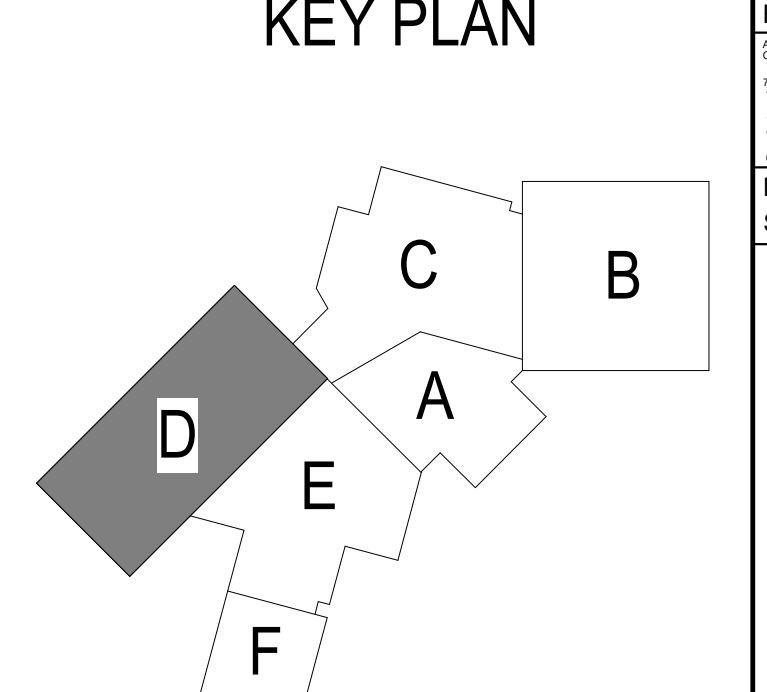
CONSTRUCTION TRADES EQUIPMENT SCHEDULE		SUPPLY CHAIN EQUIPMENT SCHEDULE	
ITEM NO.	DESCRIPTION	TYPE MARK	DESCRIPTION
C-1	BEAM CRANE - 10 TON CAPACITY	SC-1	FORK LIFT
C-2	SLIDING COMPOUND MITER SAW (N.I.C.)	SC-2	SIMULATOR
C-3	ROLLING MITER SAW STAND (N.I.C.)	SC-3	PALETTE STORAGE RACKS
C-4	HEAVY DUTY MITER SAW STAND (N.I.C.)	SC-4	KIOSK STATION FOR SYSTEMS OPERATION
C-5	BANDSAW 16"	SC-5	FORK LIFT
C-6	CNC ROUTER TABLE (N.I.C.)	SC-6	BAR CODE PRINTERS (N.I.C.)
C-7	JOINER WITH 6" HELICAL CUTTER HEAD (N.I.C.)	SC-7	BAR CODE READERS (N.I.C.)
C-8	PANEL SAW	SC-8	PRESSURE WASHER
C-9	DRILL PRESS	SC-9	PALLET JACK
C-10	HORIZONTAL BELT SANDER	SC-10	MOBILE MARKER BOARD
C-11	AIR COMPRESSOR - FIXED, GAS (N.I.C.)	SC-11A	CAGE LOCKERS
C-11A	AIR COMPRESSOR - MOBILE, GAS (N.I.C.)	SC-11B	CAGE LOCKERS
C-11B	AIR COMPRESSOR - MOBILE, ELEC. (N.I.C.)	SC-12	MANUAL SHRINK WRAP MACHINE
C-12	ROUTER TABLE	SC-13	PALLET JACK
C-13	WET/ DRY VAC (N.I.C.)	SC-14	LARGE PACKAGE SCALE - FLOOR
C-14	ROLLING TOOL CABINET	SC-15	SMALL PACKAGE SCALE - COUNTER TOP
C-15	OPEN FACED PAINT BOOTH (N.I.C.)	SC-16	LIFT TOP (N.I.C.)
C-16	DUST COLLECTOR	SC-17	BATTERY SPILL KIT
C-17	FACE FRAME & DOOR ASSEMBLY TABLE (N.I.C.)	SC-18	HEAVY DUTY TABLE
C-18	RESISTANCE TESTER (N.I.C.)	SC-19	CHARGING & MANAGEMENT CART
C-19	DRYWALL AND PANEL HOST		
C-20	PORTABLE CEMENT MIXER		
C-21	WINCH PULLER (N.I.C.)		
C-22	DOMINO JOINER WITH MULTI-FUNCTION TABLE (N.I.C.)		
C-23	TABLE SAW W/ SLIDING CROSS CUT TABLE		
C-24	MULTIPURPOSE MAXI SQUARE BAKER-STYLE SCAFFOLD TOWER PACKAGE		
C-25	STORAGE CHEST SAFETY CASE		
C-26	LUMBER AND SUPPLY STORAGE RACKS		
C-27	STORAGE BOX		
C-28	PLANER, 24"		
C-29	SANDER, DUAL DRUM 37"		
C-30	SANDING DISC/ BELT COMBO		
C-31	GENERATOR - 5,500, GAS		
C-32	TABLE SAW (N.I.C.)		
C-33	CONSTRUCTION TRAILOR (N.I.C.)		

MECHANICAL TRADES	
HV-1	SPLIT SYSTEM AC CONDENSING UNIT (N.I.C.)
HV-2	SPLIT SYSTEM AC AIR HANDLER (N.I.C.)
HV-3	RT HEAT PUMP (N.I.C.)
HV-4	RT CONVERT (N.I.C.)
HV-5	VAV SINGLE DUCT TERMINAL (N.I.C.)
HV-6	VAV FAN POWERED P TERMINAL UNIT (N.I.C.)
HV-7	VAV FAN POWERED S TERMINAL UNIT (N.I.C.)
HV-8	FLAMMABLE CABINET
HV-9	TOOL CHEST
HV-10	PACKAGED TERMINAL HEAT PUMP
HV-11	RESIDENTIAL REFRIGERATOR
HV-12	METAL STORAGE CABINET
HV-13	TRAINING UNIT - ELECTRIC HEATING CONTROL BOARD - TOP TABLE
HV-14	GROCERY DISPLAY
HV-15	GROCERY DISPLAY CONDENSERS (N.I.C.)
HV-16	WORK TABLE (N.I.C.)
HV-17	FAN WITH VIBRATION TESTING
HV-18	LINEAR SHELVING
HV-19	PACKAGED ROOFTOP CONV. - GAS/ ELEC. (N.I.C.)
HV-20	BYPASS BOX (N.I.C.)
HV-21	OUTDOOR CONDENSATION BOILER
HV-22	ELECTRICAL STRIP HEATERS (N.I.C.)
HV-23	BUILDING AUTOMATION SYSTEM (N.I.C.)
HV-24	BOILER SECONDARY PUMP
HV-25	TRAINING UNIT - BASIC REFRIGERATION
HV-26	TRAINING UNIT - INDUSTRIAL REFRIGERATION
HV-27	TRAINING UNIT - RESIDENTIAL HEAT PUMP
HV-30	THERMAL SCIENCE LEARNING SYSTEM

PLUMBING TRADES	
P-1	WATER HEATER - GAS
P-2	WATER HEATER - ELECTRIC
P-3	WATER HEATER - HEAT PUMP
P-4	WATER HEATER - ON DEMAND
P-6	PIPE THREADER
P-6	HAND THREADER
P-7	TRAINING UNIT - MODEL BATHROOM (N.I.C.)
P-8	TRAINING UNIT - MODEL KITCHEN (N.I.C.)
P-9	WORK TABLES (N.I.C.)
P-10	PIPE STORAGE RACK
P-18	ROLLING CART

ELECTRICAL TRADES	
E-1	CONDUIT BENDER - 1"
E-2	METAL STORAGE CABINETS
E-2A	BAND SAW (N.I.C.)
E-2B	CONDUIT HAND BENDER - 1/2" (N.I.C.)
E-2C	CONDUIT HAND BENDER - 3/4" (N.I.C.)
E-2D	CONDUIT THREADED (N.I.C.)
E-2E	HEAT GUN (N.I.C.)
E-2F	INDUCTION HEATER
E-3	CABLE PULLER
E-4	OILER (N.I.C.)
E-5	VERTICAL EMT/CONDUIT STORAGE
E-6	PORTABLE TRI-STAND
E-7	TOOL CABINET
E-7A	DRILL BIT SET (N.I.C.)
E-7B	HOLE SAW KIT (N.I.C.)
E-7C	REVERSIBLE HEAVY DUTY DRILL (N.I.C.)
E-8	4-WHEEL CART
E-9	THREADER (N.I.C.)
E-10	TRAINING UNIT - MOTOR CONTROLS
E-10A	PRONY BREAK (N.I.C.)
E-11	TRAINING UNIT - LARGE INDUSTRIAL CONTROLS
E-12	MOCKUP - MOTOR (N.I.C.)
E-13	STORAGE RACK (N.I.C.)
E-14	MOCKUP - GENERATOR (N.I.C.)
E-15	MOCKUP - PLC (N.I.C.)
E-16	MOCKUP - SOLAR / WIND PANEL (N.I.C.)
E-17	MOCKUP - UNINTERRUPTIBLE POWER SUPPLY (N.I.C.)
E-18	MOCKUP - BATTERY (N.I.C.)
E-19	MOCKUP - LARGE SACLE ELECTRICAL (N.I.C.)
E-20	LOAD CENTER BREAKERS (N.I.C.)
E-21	MOTOR CONTROL CENTER (N.I.C.)
E-22	MOCKUP - INDUSTRIAL WIRE (N.I.C.)
E-23	BLUE BELL SPECIAL ELECTRICAL RECEPTACLE (N.I.C.)
E-25	HANGING PLAN RACK
E-26	WORK BENCH - 2 PERSON (N.I.C.)
E-28	FAULT TROUBLESHOOTING SYSTEM
E-29	HEAVY DUTY TABLE

ROOM SCHEDULE - AREA D1			
RM. NO.	ROOM NAME	AREA	CEILING HT.
D100	CAFE KITCHEN	301 SF	10'-0"
D100A	CAFE	216 SF	10'-0"
D101	CULINARY LAB 1	1322 SF	10'-0"
D101A	DRY GOODS	200 SF	10'-0"
D102	CULINARY LAB 2	1214 SF	10'-0"
D102A	FREEZER	176 SF	NA
D102B	COOLER	91 SF	NA
D102C	KITCHEN	466 SF	10'-0"
D103	CORRIDOR	357 SF	10'-0"
D103A	RESTROOM	69 SF	10'-0"
D103B	RESTROOM	69 SF	10'-0"
D104	CORRIDOR	251 SF	OPEN
D104A	IDF	71 SF	OPEN
D105	RECEIVING VOCATIONAL LAB	1496 SF	OPEN
D105A	ELECTRICAL	94 SF	OPEN
D105B	OFFICE	71 SF	9'-0"
D106	MAINTENANCE WORKSHOP	1463 SF	OPEN
D107	CIRCULATION	249 SF	OPEN
D108	HVAC	1488 SF	OPEN
D109	CONSTRUCTION TRADES	3040 SF	OPEN
D110	PLUMBING	1755 SF	OPEN
D110A	STORAGE	425 SF	OPEN
D110B	STORAGE	230 SF	OPEN
D110C	INSTRUCTIONAL STUDIO	943 SF	10'-0"
D111	ELEC	1726 SF	OPEN
D111A	STORAGE	255 SF	OPEN
S103	STAIR 3	124 SF	OPEN



W+
WIGHTMAN
BENTON HARBOR
269.927.0100
KALAMAZOO
269.327.3532
ALLEGAN
269.673.8465
ROYAL OAK
248.791.1371
www.gowightman.com

DLR GROUP
DLR Group
303 WEST WALKER DRIVE, SUITE 600
CHICAGO, IL 60606
www.dlrgroup.com
312.785.1044

IMEG
1100 WARRENVILLE ROAD
SUITE 400W
NAPERVILLE, IL 60563
www.imegcorp.com
630.527.2320

PROJECT NAME:
Career Connect Campus
CAREER CONNECT CAMPUS
3500 VANRICK DRIVE
KALAMAZOO, MI 49001

KALAMAZOO RESA
INSPIRING EDUCATIONAL EXCELLENCE
KALAMAZOO RESA
1819 EAST MILHAM ROAD
PORTAGE, MI 49002

Issued for Bid 12/20/22
Issued For Plan 01/27/23
Review Confirmed Set 11/30/23

REVISIONS
DATE: 20 DEC 22
SCALE: 1/8" = 1'-0"

FIRST FLOOR EQUIPMENT PLAN - AREA D
JOB NO: 214175
A15.1D

FIRST FLOOR EQUIPMENT PLAN - AREA D
SCALE: 1/8" = 1'-0"



VETERINARY EQUIPMENT SCHEDULE

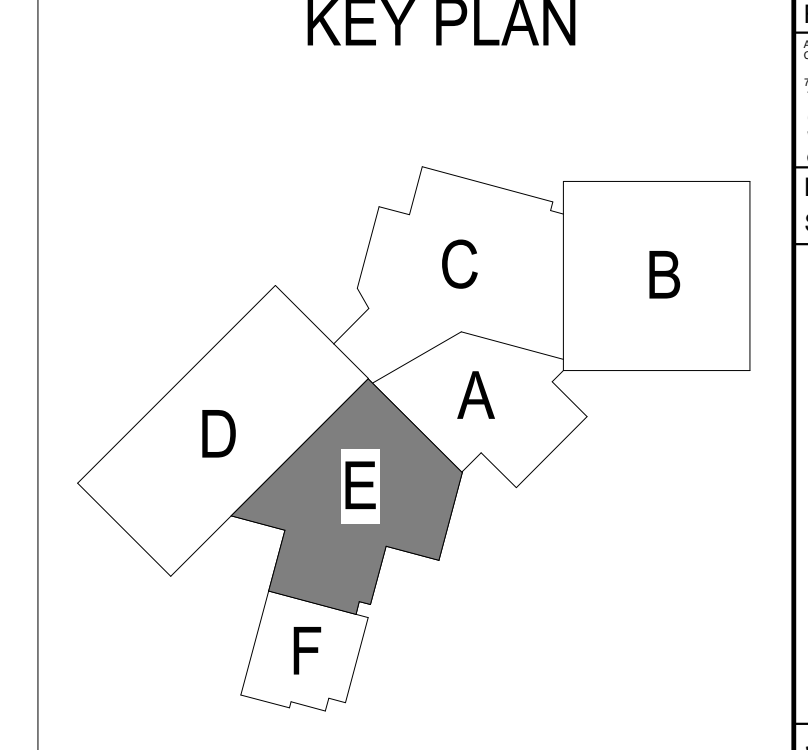
TYPE MARK	DESCRIPTION
V-1	GROOMING TABLE - POWER ADJUSTABLE
V-2	STAND HAIR DRYER WITH ACCESSORY KIT
V-3	GROOMING TUB STAINLESS WITH STAIRS
V-4A	STAINLESS CAGES, MOBILE, 30X24
V-4B	STAINLESS CAGES, MOBILE, 60X36
V-5	XRAY MACHINE WITH STATIONARY TABLE UNIT
V-6	XRAY COMPUTER MOUNTED ON WALL (N.I.C.)
V-7	ULTRASOUND MACHINE
V-8	UPRIGHT PHARMACY REFRIGERATOR
V-9	NARCOTICS CABINET - MEDIUM
V-10	EXAM TABLE - POWER ADJUSTABLE PEDESTAL
V-10A	EXAM TABLE - POWER ADJUSTABLE PEDESTAL W/ BACKING
V-11	ISOLATION TREATMENT TABLE
V-12	ISOLATION MOBILE TREATMENT CART
V-13	ISOLATION CAGES, STATIONARY STACKED 1-36 X24, 1-80X36
V-14	SURGICAL PEDESTAL TABLE - POWER ADJUSTABLE
V-15	WET-PREP TABLES WITH ISLAND CABINET (2 STATIONS)
V-16	PROCEDURE LIGHT
V-17	DENTAL DELIVERY SYSTEM - MOBILE
V-18	FLOOR PLATFORM WALK-ON SCALE
V-19	FREEZER MEDICAL WASTE
V-20	STEAM STERILIZER
V-21	EXC-400 MICROSCOPE
V-22	INCUBATOR
V-23	PORTABLE ULTRASOUND
V-24	ELECTROCAUTERY - ELC SURGICAL GENERATOR
V-25	ULTRASOUND CLEANER
V-26	ANESTHESIA MACHINE - COMPLETE SYSTEM
V-27	ANESTHESIA TABLE AND CART
V-28	STAINLESS STEEL UTILITY CARTS 2-3 SHELVES
V-29	STAINLESS STEEL TREATMENT CARTS
V-30	CAT STAINLESS CONDOSUITES DOUBLE HEIGHT (6 CATS)
V-31	EXOTICS CAGES
V-32	SMALL DOG KENNELS (5 DOGS)
V-33	LARGE DOG KENNELS (4 DOGS)
V-34	CENTRIFUGE
V-35	INCUBATOR WARMING CABINET
V-36	SURGICAL SCRUB SINK
V-37A	PVC DOG BED
V-37B	PVC DOG BED
V-38	REFRIGERATOR (N.I.C.)
V-40	WISHER
V-41	DRYER
V-42	ANALYZER SYSTEMS
V-43	ANALYZER SYSTEMS
V-44	ANESTHESIA MACHINE - COMPLETE SYSTEM (N.I.C.)

AG SCIENCE EQUIPMENT SCHEDULE

TYPE MARK	DESCRIPTION
AG-1	GROW TABLES
AG-2	GROW LAMPS
AG-3	GROW SHELVING UNITS
AG-4	MOBILE CARTS
AG-5	HYDROPONIC GROW SYSTEM
AG-6	BASIC HAND TOOLS (N.I.C.)
AG-7	APIARY SUPPLIES
AG-8	MICROSCOPES
AG-9	INDOOR ANIMAL HOUSING (N.I.C.)
AG-10	FISH TANK (N.I.C.)
AG-11	REFRIGERATOR (N.I.C.)
AG-12	LIVESTOCK TRAILERS (N.I.C.)
AG-13	COMPOST BOX (N.I.C.)
AG-14	FORKS (N.I.C.)
AG-15	WHEELBARROWS (N.I.C.)
AG-16	FEED BINS (N.I.C.)
AG-17	FLEXIBLE DIVIDER SYSTEMS (N.I.C.)
AG-18	WALTERS (N.I.C.)
AG-19	AUTOMATIC WATERERS (N.I.C.)
AG-20A	FLEXIBLE STALLS/PENS (N.I.C.)
AG-20B	FLEXIBLE STALLS/PENS (N.I.C.)
AG-21	WASH STALLS (N.I.C.)
AG-22A	ANIMAL TRANSPORT CAGES (N.I.C.)
AG-22B	ANIMAL TRANSPORT CAGES (N.I.C.)
AG-23	MOBILE BUTCHER BLOCK WORK TABLE
AG-24	AQUAPONIC GROW SYSTEM

ROOM SCHEDULE - AREA E1

RM. NO.	ROOM NAME	AREA	CEILING HT.
CR103	CORRIDOR	673 SF	10'-0"
E100	VET CLINIC	365 SF	VARIES
E100A	CORRIDOR	594 SF	10'-0"
E100B	INDOOR PLAY	134 SF	10'-0"
E100C	EXOTICS	143 SF	10'-0"
E100D	DRY STORAGE	149 SF	10'-0"
E100E	CAT HOLDING	154 SF	10'-0"
E100F	JANITOR	65 SF	10'-0"
E100G	STORAGE	186 SF	10'-0"
E100H	BIO WASTE	88 SF	10'-0"
E100I	KENNELS 2	217 SF	10'-0"
E100J	VESTIBULE	90 SF	10'-0"
E100K	KENNELS 1	274 SF	10'-0"
E100L	DP	68 SF	OPEN
E100M	ELECTRICAL	75 SF	OPEN
E101	GROOMING	289 SF	10'-0"
E102	PREP	862 SF	10'-0"
E102A	EXAM	109 SF	10'-0"
E102B	EXAM	106 SF	10'-0"
E102C	X-RAY	106 SF	10'-0"
E102D	PHARMACY	114 SF	10'-0"
E102E	ISOLATION	104 SF	10'-0"
E102F	SURGICAL	244 SF	10'-0"
E103	INSTRUCTIONAL STUDIO	977 SF	10'-0"
E103A	STORAGE	77 SF	10'-0"
E104	LARGE CONFERENCE	226 SF	10'-0"
E105	INSTRUCTIONAL STUDIO	879 SF	10'-0"
E105A	STORAGE	84 SF	10'-0"
E106	INSTRUCTIONAL STUDIO	894 SF	10'-0"
E107A	STAFF RESTROOM	65 SF	9'-0"
E107B	STAFF RESTROOM	65 SF	9'-0"
E108	MECH	688 SF	OPEN
E108A	RESTROOM	306 SF	VARIES
E109C	RESTROOM	344 SF	VARIES
E111	AG LAB	1093 SF	OPEN
E111A	STOR	109 SF	10'-0"
E112	URBAN FARM TO TABLE	721 SF	OPEN
S104	STAIR 4	275 SF	OPEN



W+
WIGHTMAN
 BENTON HARBOR
 269.927.0100
 KALAMAZOO
 269.327.3532
 ALLEGAN
 269.673.8465
 ROYAL OAK
 248.791.1371

DLR GROUP
 © DLR Group
 303 WEST WALKER DRIVE, SUITE 600
 CHICAGO, IL 60606
 www.dlrgroup.com
 312.785.1044

IMEG
 1100 WARRENVILLE ROAD
 SUITE 400W
 NAPERVILLE, IL 60563
 www.imegcorp.com
 630.527.2320

PROJECT NAME:
Career Connect Campus
CAREER CONNECT CAMPUS
 3500 VANRICK DRIVE
 KALAMAZOO, MI 49001

KALAMAZOO RESA
 INSPIRING EDUCATIONAL EXCELLENCE
KALAMAZOO RESA
 1819 EAST MILHAM ROAD
 PORTAGE, MI 49002

REVISIONS

NO.	DATE	DESCRIPTION
1	12/20/2022	Issued for Bid
2	01/27/2023	Issued For Plan
3	11/30/2023	Review

THE REPRODUCTION, COPYING OR OTHER USE OF THIS DRAWING WITHOUT WRITTEN CONSENT IS PROHIBITED.
 © 2022 WIGHTMAN & ASSOCIATES, INC.
 DATE: 20 DEC 22
 SCALE: 1/8" = 1'-0"

FIRST FLOOR EQUIPMENT PLAN - AREA E
 JOB NO: 214175
A15.1E

FIRST FLOOR EQUIPMENT PLAN - AREA E
 SCALE: 1/8" = 1'-0"

MECHATRONICS & INDUSTRIAL DESIGN EQUIPMENT SCHEDULE

ITEM NO.	DESCRIPTION
MECHATRONICS	
M-1	I4 Course 1 Equipment Package (N.I.C.)
M-2	I4 Course 2 Equipment Package (N.I.C.)
M-3	I4 Course 4 Equipment Package (N.I.C.)
M-4	I4 Course 4 Equipment Package (N.I.C.)
M-5	AC/DC TABLETOP TRAINER (N.I.C.)
M-6	PNEUMATICS TABLETOP (N.I.C.)
M-7	POWER TECHNOLOGY TABLETOP TRAINER (TABLE TOP) (N.I.C.)
M-8	LEVEL/FLOW PROCESS CONTROL TROUBLESHOOTING LEARNING SYSTEM (BENCH MOUNTED) (N.I.C.)
M-9	TOOL/SUPPLY STORAGE CART WITH DRAWERS (MOBILE)
M-10	SMALL AIR COMPRESSOR
M-11	WIRE SHELVES (N.I.C.)
M-12	MAKERSPACE TABLE (N.I.C.)
M-13	COMPUTER - DESKTOP (N.I.C.)
M-14	MONITOR (N.I.C.)
M-15	MOUSE (N.I.C.)
M-16	KEYBOARD (N.I.C.)
INDUSTRIAL DESIGN	
ID-1	36 IN. PLOTTER/SCANNER (N.I.C.)
ID-2	TABLETOP PAINT SPRAY BOOTH
ID-3	3D PRINTER (TABLETOP) (N.I.C.)
ID-4	LARGE FORMAT 3D PRINTER (N.I.C.)
ID-5	3D SLA PRINTER (TABLETOP) (N.I.C.)
ID-6	3D WASH STATION (N.I.C.)
ID-7	3D CURING STATION (N.I.C.)
ID-8	SOLVENT RECLAIMING SYSTEM
ID-9	LASER CUTTER (TABLETOP) (N.I.C.)
ID-10	HOT WIRE FOAM CUTTER (TABLETOP) (N.I.C.)
ID-11	11x17 COLOR PRINTER - LASER (N.I.C.)
ID-12	11x17 COLOR PRINTER - INK JET (N.I.C.)
ID-13	WIRE SHELVES
ID-14	PAPER CUTTER
ID-15	LIGHT TABLE
ID-16	COMPUTER - LAPTOP (N.I.C.)
ID-17	MONITOR (N.I.C.)
ID-18	MOUSE (N.I.C.)
ID-19	KEYBOARD (N.I.C.)

W+
WIGHTMAN
BENTON HARBOR
269.927.0100
KALAMAZOO
269.327.3532
ALLEGAN
269.673.8465
ROYAL OAK
248.791.1371
www.gowightman.com

DLR GROUP
DLR Group
303 WEST WALKER DRIVE, SUITE 600
CHICAGO, IL 60606
www.dlrgrp.com
312.785.1044

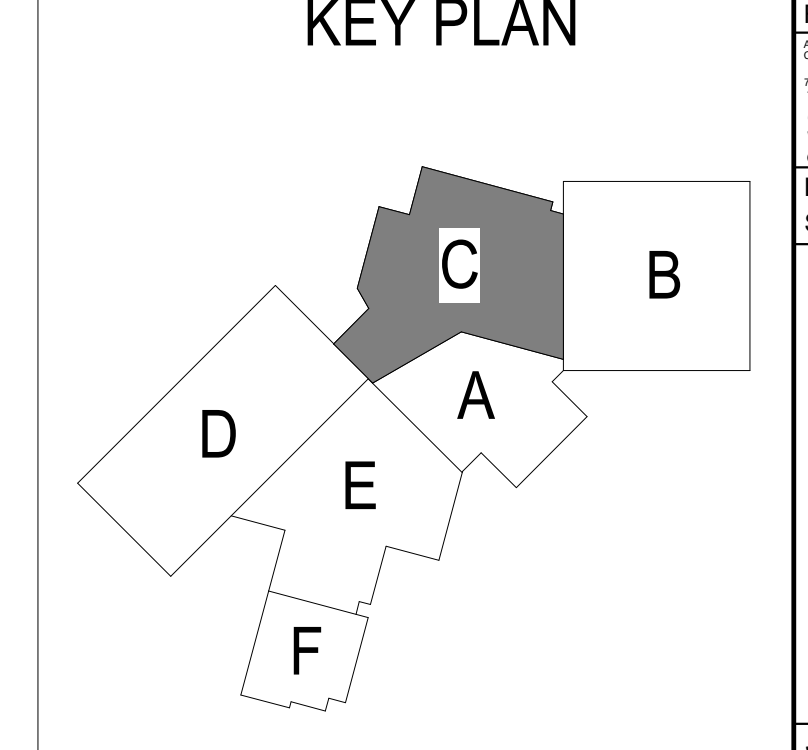
IMEG
1100 WARRENVILLE ROAD
SUITE 400W
NAPERVILLE, IL 60563
www.imegcorp.com
630.527.2320

PROJECT NAME:
Career Connect Campus
CAREER CONNECT CAMPUS
3500 VANRICK DRIVE
KALAMAZOO, MI 49001

KALAMAZOO RESA
INSPIRING EDUCATIONAL EXCELLENCE
KALAMAZOO RESA
1819 EAST MILHAM ROAD
PORTAGE, MI 49002

ROOM SCHEDULE - AREA C2

RM. NO.	ROOM NAME	AREA	CEILING HT.
C200	DIGITAL/MULTIMEDIA & INFORMATION RESOURCES DESIGN	1307 SF	10'-0"
C200A	IDF	66 SF	OPEN
C200B	IDF	83 SF	OPEN
C202	COMPUTER PROGRAMMING/PROGRAMMER	1321 SF	10'-0"
C203	SMALL MEETING	118 SF	10'-0"
C204	SMALL MEETING	104 SF	10'-0"
C206	MECHATRONICS	1801 SF	OPEN
C206A	MECH STORAGE	157 SF	OPEN
C207	INSTRUCTIONAL STUDIO	973 SF	10'-0"
C208	INDUSTRIAL DESIGN	1641 SF	OPEN
C208A	WORK ROOM	142 SF	10'-0"
C208B	PAINT ROOM	50 SF	10'-0"
C208	INSTRUCTIONAL STUDIO	803 SF	10'-0"
C210	WORK SPACE	248 SF	OPEN
C299	OUTDOOR TERRACE	620 SF	NA
CR203A	STOR	19 SF	OPEN
CR204	CORRIDOR	1651 SF	OPEN
S107	STAIR 7	269 SF	OPEN



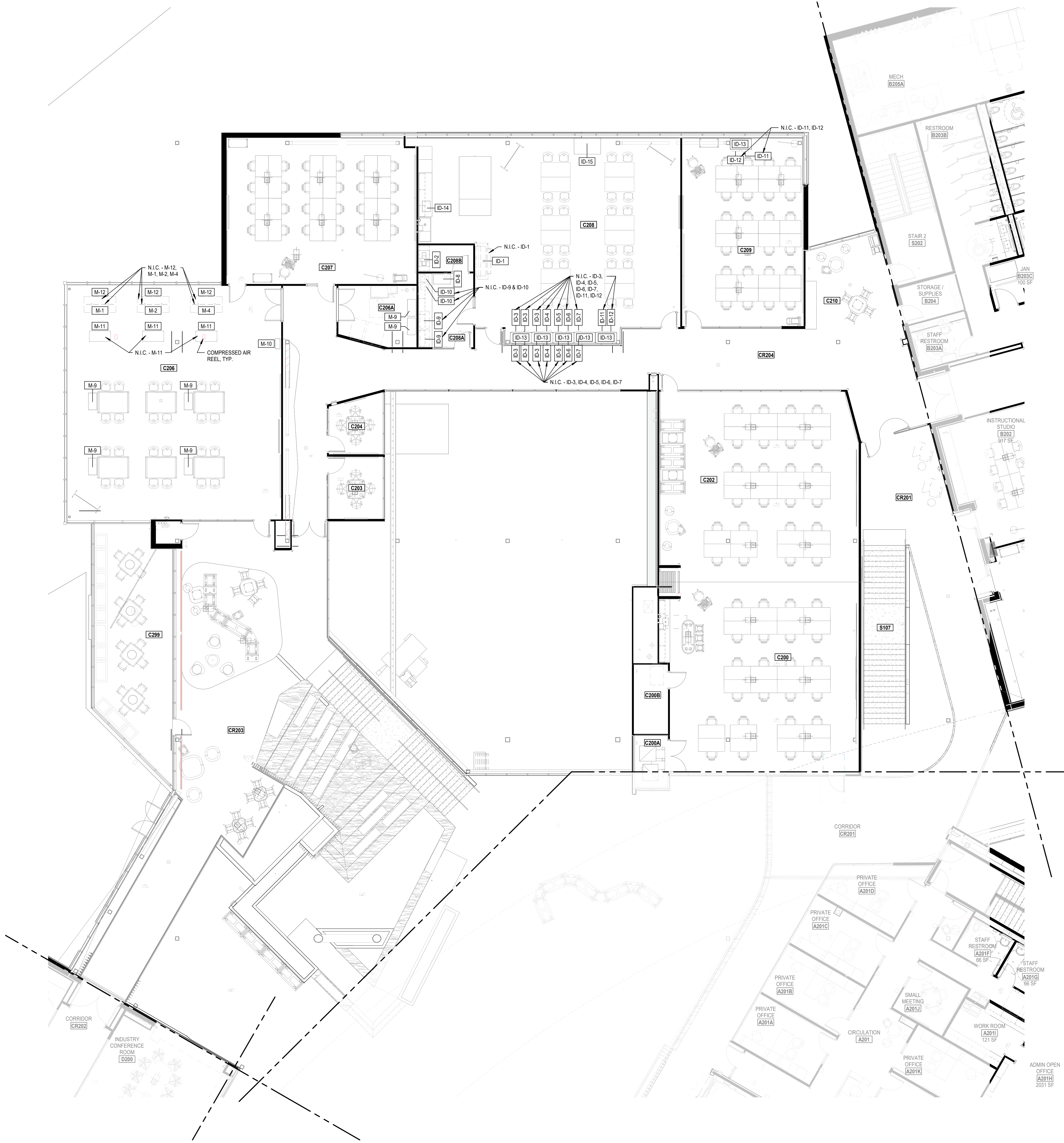
REVISIONS

NO.	DESCRIPTION	DATE
1	ISSUED FOR BID	12/20/2022
2	ISSUED FOR PLAN REVIEW	01/27/2023
3	CONFORMED SET	11/30/2023

THE REPRODUCTION, COPYING OR OTHER USE OF THIS DRAWING WITHOUT WRITTEN CONSENT IS PROHIBITED.
© 2023 WIGHTMAN & ASSOCIATES, INC.
DATE: 20 DEC 22
SCALE: 1/8" = 1'-0"

SECOND FLOOR EQUIPMENT PLAN - AREA C

JOB NO: 214175
A15.2C



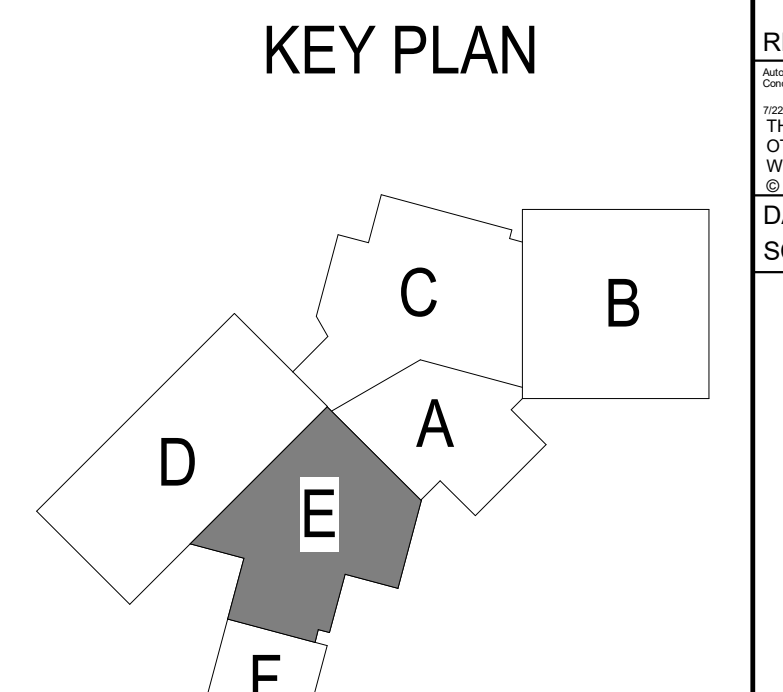
SECOND FLOOR EQUIPMENT PLAN - AREA C
SCALE: 1/8" = 1'-0"

HEALTH EDUCATION EQUIPMENT SCHEDULE

ITEM NO.	DESCRIPTION
CLINIC	
H-1	INTEGRATED WALL SYSTEM - DIAGNOSTIC TOOLS (EYES, EARS, TEMP, BLOOD PRESSURE)
H-2	VITAL STAND/ MOBILE CART
H-3	SCALE
H-3A	MECHANICAL BEAM SCALE (N.I.C.)
H-4	EXAM BED STANDARD WITH STORAGE BELOW
H-5	EXAM BED WOMANS WITH STORAGE BELOW (N.I.C.)
H-6	HOSPITAL BED FULL ELECTRIC
H-7	PEDIATRIC EXAM TABLE (N.I.C.)
H-8	TRANSPORT STRETCHER BED (N.I.C.)
H-9	PHLEBOTOMY CHAIRS
H-10	WALL MOUNT NEEDLE DISPOSAL UNIT
H-11	AUTOMATIC STERILIZER (N.I.C.)
H-12	CENTRIFUGE
H-13	ANALYZER (N.I.C.)
H-14	CLEAN GOWN LINENS STORAGE CART (COVERED)
H-15	DIRTY DOWNLINES STORAGE MOBILE HAMPER
H-16	MEDICAL MOBILE TABLE / WORKSTATION CART
H-17	MEDIAL ROLLING STOOL
H-18	MICROSCOPE (N.I.C.)
H-19	URISPEC PLUS (N.I.C.)
H-20	INCUBATOR (N.I.C.)
H-21	AUTOClave
H-22	EYE EXAM (N.I.C.)
H-23	TEST TUBE ROCKER
H-24	ICE MACHINE
H-25	REFRIGERATOR
H-25A	RESIDENTIAL REFRIGERATOR
H-26	EKG EQUIPMENT (N.I.C.)
H-27	COLD CENTRIFUGE
H-28	SPECIMEN FREEZER
H-29	HEAT BLOCK
H-30	ALIGATOR
H-31	HOT PLATE
H-32	TUBE RACKS (N.I.C.)
H-33	CHEM ANALYZER (N.I.C.)
H-34	HgA/C Analyser
H-35	HEMATOCYNT ANALYZER (N.I.C.)
H-36	CELL COUNTER (N.I.C.)
H-37	URINALYSIS ANALYZER
H-38	IMMUNOASSAY ANALYZER (N.I.C.)
H-39	PATIENT TRANSFER BOARD
H-40	Resting ECG System
H-41	3D Anatomy Table- 7x3' (N.I.C.)
H-42	LAPTOP COMPUTERS (N.I.C.)
H-43	CURVED MONITOR (N.I.C.)
H-44	STANDARD DUTY TABLE
PHARMACY	
PH-1	DRUG SHELVING- DOUBLE SIDED UNITS
PH-2	PHARMACY MED BAG HANGER RACK - DOUBLE SIDED
PH-3	MEDICATION
PH-4	REGISTER WITH BAR CODE SCANNER (N.I.C.)
PH-8	FREEZER
PH-10	LABEL PRINTER (N.I.C.)
PH-11	LOCKABLE MEDICATION CART (N.I.C.)
PH-12	BIOHAZARD BINS
PH-12A	CRASH CART (N.I.C.)
PH-13	SHREDDER (N.I.C.)
PH-14	ORAL SOLI UNIT DOSE PACKAGER (N.I.C.)
PH-15	PILL COUNTER
PH-16	LIQUID UNIT DOSE PACKAGER (N.I.C.)
PH-17	BARCODE SCANNER (N.I.C.)
PHYSICAL THERAPY	
PT-1	EXAM/THERAPY TREATMENT TABLE
PT-2	EXERCISE BIKE OR ELLIPTICAL MACHINE
PT-3	TREADMILL
PT-4	MISC APPARATUS FOR EXERCISE - STEP UP AND DOWN
PT-5	MIS APPARATUS FOR EXERCISE - LEG PRESS
PT-6	ARM BIKE MACHINE
PT-7	RACK FOR WEIGHTS & BANDS
PT-8	VERTICAL RACK FOR EXERCISE BALLS
PT-9	TOWEL WARMER
PT-10	REFRIGERATOR (UNDERCOUNTER) (N.I.C.)
PT-11	ICE MACHINE (N.I.C.)
PT-12	WATER COOLER/DISPENSER (N.I.C.)
PT-13	DIRTY TOWEL MOBLE HAMPER (N.I.C.)
PT-14	REP BANDS (N.I.C.)
PT-15	CLIFF WEIGHTS (N.I.C.)
PT-16	PULLEYS (N.I.C.)
PT-17	BARS/BANDS (N.I.C.)
PT-18	FOLDING PARALLEL BARS

ROOM SCHEDULE - AREA E2

RM. NO.	ROOM NAME	AREA	CEILING HT.
CR205	CORRIDOR	680 SF	10'-0"
E200	PHYSICAL THERAPY	1007 SF	10'-0"
E200A	EXAM	131 SF	10'-0"
E200B	STORAGE	104 SF	OPEN
E201	SIMULATED CLINIC	1901 SF	VARIES
E201A	HEALTH SIMULATION	171 SF	8'-0"
E201B	RESTROOM	79 SF	8'-0"
E202	BREAKOUT ROOM	312 SF	10'-0"
E203	SIMULATED LAB	1171 SF	10'-0"
E203B	STOR	65 SF	OPEN
E204	CORRIDOR	400 SF	10'-0"
E205	LAB	1072 SF	10'-0"
E205A	STORAGE	101 SF	OPEN
E206	LAB	979 SF	10'-0"
E206A	STORAGE	93 SF	OPEN
E206B	PHARMACY	483 SF	10'-0"
E207A	STAFF RESTROOM	75 SF	10'-0"
E207B	STAFF RESTROOM	76 SF	10'-0"
E208	MECH	689 SF	OPEN
E209A	RESTROOM	361 SF	VARIES
E209C	RESTROOM	341 SF	VARIES
E211	INSTRUCTIONAL STUDIO	959 SF	10'-0"
E212	INSTRUCTIONAL STUDIO	980 SF	10'-0"
E213	SMALL MEETING	88 SF	10'-0"
E214	ADMIN	132 SF	10'-0"
S204	STAIR 4	275 SF	OPEN



REVISIONS

DATE: 20 DEC 22
SCALE: 1/8" = 1'-0"

W+
WIGHTMAN
BENTON HARBOR
269.927.0100
KALAMAZOO
269.327.3532
ALLEGAN
269.673.8465
ROYAL OAK
248.791.1371

www.gowightman.com

DLR GROUP
© DLR Group
303 WEST WALKER DRIVE, SUITE 600
CHICAGO, IL 60608
www.dlrgroup.com
312.785.1044

IMEG
1100 WARRENVILLE ROAD
SUITE 400W
NAPERVILLE, IL 60563
www.imegcorp.com
630.527.2320

PROJECT NAME:
Career Connect Campus
CAREER CONNECT CAMPUS
3500 VANRICK DRIVE
KALAMAZOO, MI 49001

KALAMAZOO RESA
INSPIRING EDUCATIONAL EXCELLENCE
KALAMAZOO RESA
1819 EAST MILHAM ROAD
PORTAGE, MI 49002



SECOND FLOOR EQUIPMENT PLAN - AREA E
SCALE: 1/8" = 1'-0"

SECOND FLOOR EQUIPMENT PLAN - AREA E
JOB NO: 214175
A15.2E

GENERAL NOTES

- GENERAL NOTES APPLY TO ALL SHEETS.
- DO NOT SCALE DRAWINGS. DIMENSIONS NOTED PREVAIL. NOTIFY ARCHITECT IN CASE OF DISCREPANCY.
- DIMENSIONS ARE ACTUAL AND ARE TO FINISH FACE OF WALL, FACE OF CONCRETE WALLS, FACE OF CMU WALLS, FACE OF FRAMES, OR CENTERLINE OF COLUMNS, UNLESS NOTED OTHERWISE.
- INCLUDE ALL OWNER-FURNISHED AND INSTALLED ITEMS AND OWNER-FURNISHED AND CONTRACTOR-INSTALLED ITEMS IN THE CONSTRUCTION SCHEDULE, AND SHALL COORDINATE WITH THE OWNER TO ACCOMMODATE THESE ITEMS.
- ARCHITECTURAL FINISH FLOOR ELEVATION 100'-0" EQUALS ACTUAL SITE REFERENCE ELEVATION OF FINISH FLOOR 851'-0".
- SEE CODE PLANS CP.2, CP.1, CP.2 FOR LOCATION OF WALLS OF FIRE-RESISTANCE-RATED CONSTRUCTION. ALL WALLS OF FIRE-RESISTANCE-RATED CONSTRUCTION SHALL EXTEND TO UNDERSIDE OF FLOOR OR ROOF DECK ABOVE.
- ALL PENETRATIONS THROUGH WALLS SHALL BE SEALED WITH PENETRATION FIRE STOPPING MATERIAL AS REQUIRED TO ACHIEVE THE RESPECTIVE FIRE-RESISTANCE RATING AND SMOKE STOPPAGE. SEE SPECIFICATION SECTION 078413.
- COORDINATE WITH MECHANICAL AND ELECTRICAL CONTRACTORS THE SIZE AND LOCATION OF EQUIPMENT PADS SHOWN ON PLANS.
- FIRE-RESISTANCE-RATED ENCLOSURES AROUND ALL STEEL COLUMNS SHALL BE CONTINUOUS FROM FLOOR TO UNDERSIDE OF FLOOR OR ROOF DECK ABOVE FOR EACH LEVEL.
- CONSTRUCTION DOCUMENTS ARE COMPLEMENTARY. SEE DRAWING FOR QUANTITIES AND LOCATION OF WORK. SEE SPECIFICATIONS FOR QUALITIES AND CONDITIONS OF WORK.
- WORK: ALL ASPECTS OF THE WORK AND ITEMS NOT SPECIFICALLY MENTIONED, BUT NECESSARY TO MAKE A COMPLETE WORKING INSTALLATION, SHALL BE INCLUDED AND INDICATED IN THE CONTRACTOR'S BID.
- NO ASBESTOS OR PCB CONTAINING MATERIALS SHALL BE USED ON THIS PROJECT.
- HORIZONTAL AND VERTICAL DIMENSIONS ARE MINIMUM DIMENSIONS. CLEARANCES ARE GIVEN TO FINISH SURFACES. GO TO VERIFY ALL CLEARANCES. NOTIFY ARCHITECT IN CASE OF DISCREPANCY.
- ALL INTERIOR CMU WALLS SHALL BE 8 INCHES NOMINAL THICKNESS, UNLESS NOTED OTHERWISE.
- WALL TYPES SHALL BE DESIGNATED ON FLOOR PLANS THUS: (XX X XX) SEE SHEET AB.1 FOR WALL TYPES. ALL INTERIOR PARTITIONS ARE WALL TYPE SA.3.20 UNLESS NOTED OTHERWISE.
- ALL MASONRY WALLS AND INTERIOR STUD WALLS SHALL EXTEND TO UNDERSIDE OF FLOOR OR ROOF DECK ABOVE UNLESS NOTED OTHERWISE. SEE REFLECTED CEILING PLAN NOTES.
- PROVISIONS SHALL BE MADE AT ALL FULL HEIGHT NON-BEARING WALLS FOR 1-INCH VERTICAL MOVEMENT OF THE BUILDING STRUCTURE WITHOUT TRANSFER OF COMPRESSIVE LOADS TO WALL. FILL IRREGULARITIES BETWEEN TOP OF WALL AND DECK ABOVE WITH MINERAL WOOL INSULATION OR FIRE STOPPING MATERIALS AS REQUIRED TO MEET FIRE RATINGS OF RESPECTIVE WALLS. SEE DETAILS ON SHEET XX.X.
- SEE STRUCTURAL DRAWINGS FOR BRACING OF NON-LOAD BEARING MASONRY WALLS.
- FURNISH AND INSTALL FIRE-TREATED WOOD BLOCKING OR METAL BACKING PLATE IN METAL STUD PARTITIONS FOR THE PROPER ANCHORAGE OF ALL WALL ATTACHED ITEMS. I.E. TOILET ACCESSORIES, CASEWORK, MILLWORK, WALL-MOUNTED FIXTURES, MARKER BOARDS, TACK BOARDS, DOOR STOPS, AUDIO VISUAL BRACKETS, AND OTHER WALL ATTACHED ITEMS.
- GYPSUM BOARD SURFACES SHALL BE ISOLATED WITH CONTROL JOINTS WHERE SHOWN ON DRAWINGS AND AS DESCRIBED IN THE SPECIFICATIONS.
- MASONRY CONTROL JOINTS (CJ) AND CONTROL JOINTS ABOVE (CA) SHALL BE LOCATED AS SHOWN ON THE FLOOR PLAN AND BUILDING ELEVATIONS, AND WHERE LARGE PLUMBING VENTS OR RISERS OCCUR IN SINGLE WYTHE MASONRY WALLS, AND WHERE MASONRY WALLS BEARING ON THE CONCRETE FLOOR SLAB ABUT MASONRY WALLS BEARING ON CONCRETE FOOTINGS OR AS INDICATED ON DRAWINGS.
- "MBD" AND "TBD" INDICATE MARKER BOARDS AND TACK BOARDS ON PLANS. THE LENGTH PRECEDES THE DESIGNATION (EXAMPLE 16 MBD). ALL BOARDS ARE 4'-0" TALL U.N.O. SEE WALL ELEVATIONS OR SPECIFICATIONS FOR MOUNTING HEIGHT.
- EXTEND FURRING CHANNELS AND GYPSUM BOARD UP 4 INCHES ABOVE FINISHED CEILING ON CMU WALLS.
- SCRIBE GYPSUM WALL BOARD OF WALLS AND PARTITIONS TO IRREGULARITIES OF DECK ABOVE. SEAL TIGHTLY AROUND ALL PENETRATIONS.
- SET ALL HINGE SIDE OF DOOR FRAMES 4" FROM ADJACENT WALLS OR FIXED CONSTRUCTION, UNO. NOTIFY ARCHITECT OF LOCATIONS LESS THAN 4".
- MARKERBOARDS / TACKBOARDS / FLAT PANEL DISPLAYS ARE TO BE CENTERED ON WALL U.N.O.

W+
WIGHTMAN
BENTON HARBOR
269.927.0100
KALAMAZOO
269.327.3532
ALLEGAN
269.673.8465
ROYAL OAK
248.791.1371
www.gowightman.com

DLR GROUP
DLR Group
303 WEST WALKER DRIVE, SUITE 600
CHICAGO, IL 60606
www.dlr.com
312.761.1044

IMEG
1100 WARRENVILLE ROAD
SUITE 400W
NAPERVILLE, IL 60563
www.imegcorp.com
630.527.2300

STATE OF MICHIGAN
GEORGE M. KACAN
ARCHITECT
No. 1301036813
LICENSED ARCHITECT

PROJECT NAME:
Career Connect Campus
CAREER CONNECT CAMPUS
3500 VANRICK DRIVE
KALAMAZOO, MI 49001

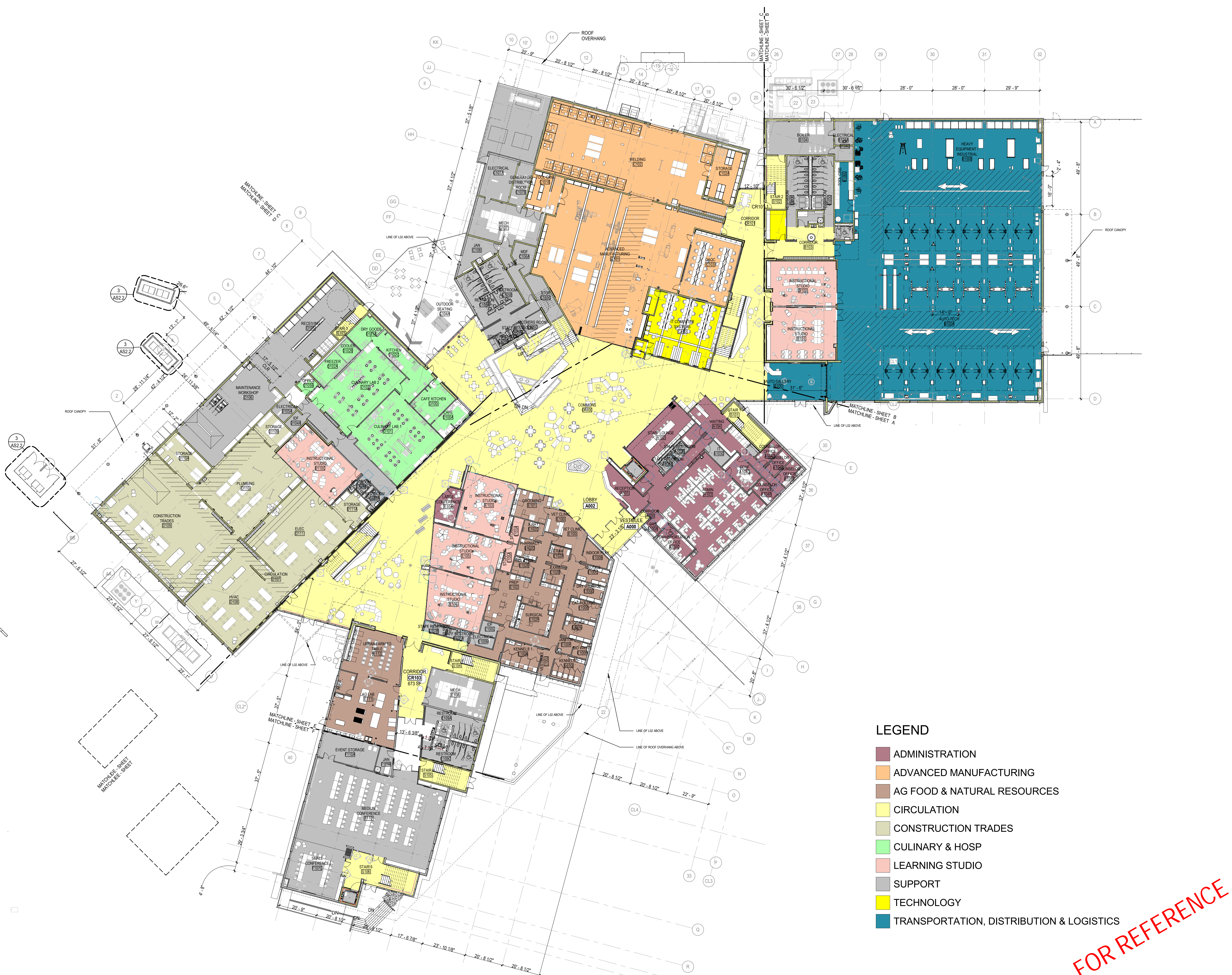
KALAMAZOO RESA
INSPIRING EDUCATIONAL EXCELLENCE
KALAMAZOO RESA
1819 EAST MILHAM ROAD
PORTAGE, MI 49002

Issued For Bid	12/20/2022
2 Addendum 3	01/18/2023
3 Addendum 4	01/26/2023
Issued For Plan	01/27/2023
Revision	
10 Bulletin 9	05/24/2023
12 Bulletin 11	06/23/2023
Confirmed Set	11/30/2023

REVISIONS
THE REPRODUCTION, COPYING OR OTHER USE OF THIS DRAWING WITHOUT WRITTEN CONSENT IS PROHIBITED.
DATE: 20 DEC 22
SCALE: As Indicated

OVERALL FIRST FLOOR PLAN

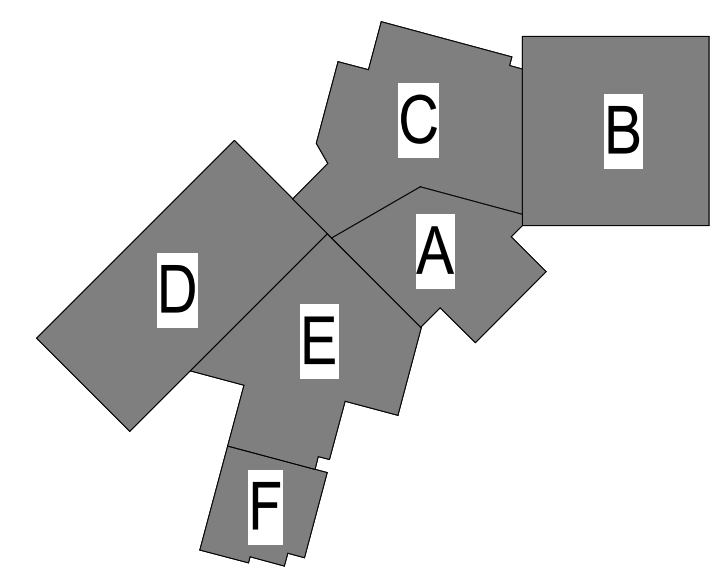
JOB NO: 214175
A1.1

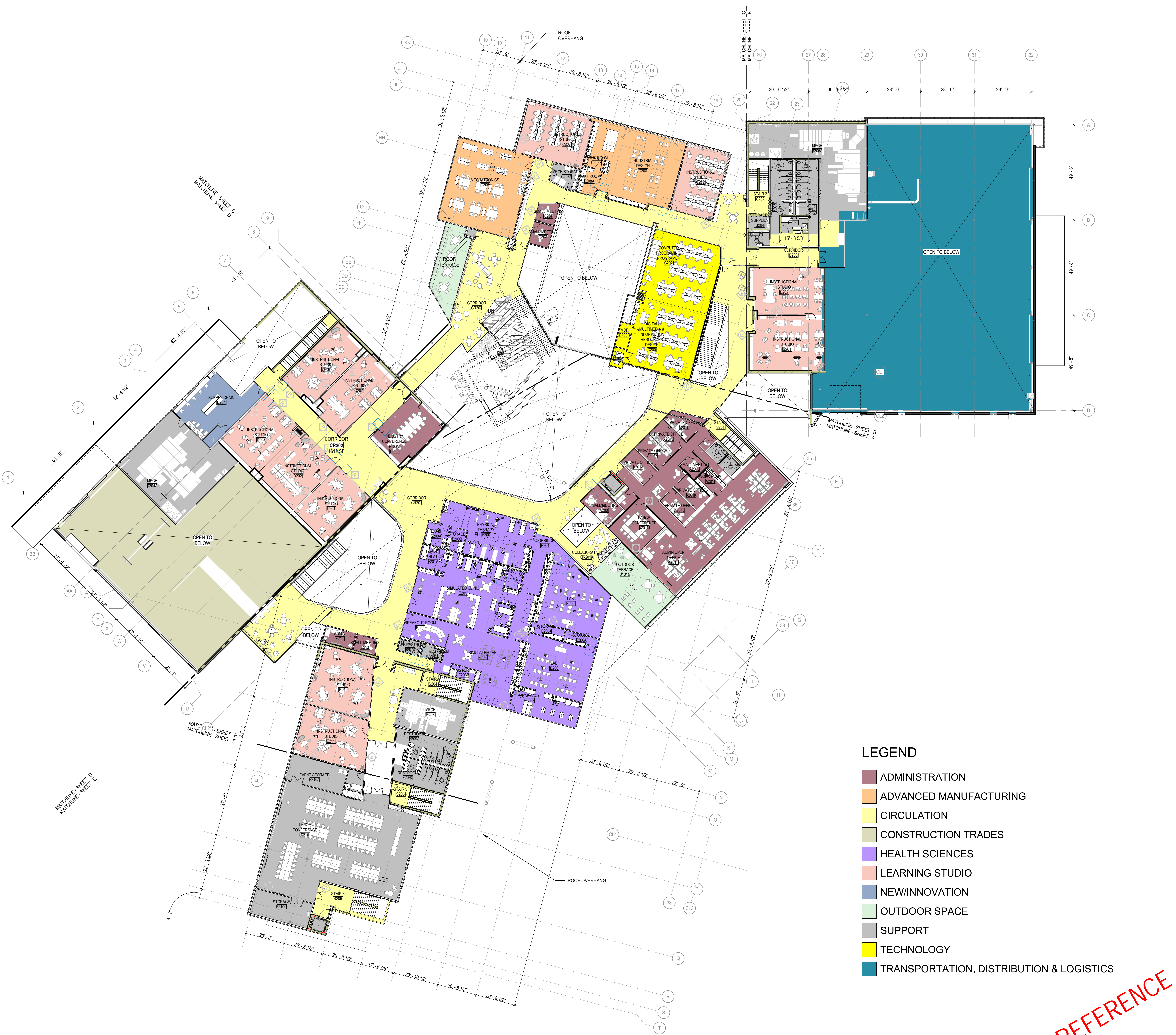


LEGEND

- ADMINISTRATION
- ADVANCED MANUFACTURING
- AG FOOD & NATURAL RESOURCES
- CIRCULATION
- CONSTRUCTION TRADES
- CULINARY & HOSP
- LEARNING STUDIO
- SUPPORT
- TECHNOLOGY
- TRANSPORTATION, DISTRIBUTION & LOGISTICS

KEY PLAN





GENERAL NOTES

- GENERAL NOTES APPLY TO ALL SHEETS.
- DO NOT SCALE DRAWINGS. DIMENSIONS NOTED PREVALENT. NOTIFY ARCHITECT IN CASE OF DISCREPANCY.
- DIMENSIONS ARE ACTUAL AND ARE TO FINISH FACE OF WALL, FACE OF CONCRETE WALLS, FACE OF CMU WALLS, FACE OF FRAMES, OR CENTERLINE OF COLUMNS, UNLESS NOTED OTHERWISE.
- INCLUDE ALL OWNER-FURNISHED AND INSTALLED ITEMS AND OWNER-FURNISHED AND CONTRACTOR-INSTALLED ITEMS IN THE CONSTRUCTION SCHEDULE, AND SHALL COORDINATE WITH THE OWNER TO ACCOMMODATE THESE ITEMS.
- ARCHITECTURAL FINISH FLOOR ELEVATION 100'-0" EQUALS ACTUAL SITE REFERENCE ELEVATION OF FINISH FLOOR 851'-0".
- SEE CODE PLANS CP.2, CP.1, CP.1.2 FOR LOCATION OF WALLS OF FIRE-RESISTANCE-RATED CONSTRUCTION. ALL WALLS OF FIRE-RESISTANCE-RATED CONSTRUCTION SHALL EXTEND TO UNDERSIDE OF FLOOR OR ROOF DECK ABOVE.
- ALL PENETRATIONS THROUGH WALLS SHALL BE SEALED WITH PENETRATION FIRE STOPPING MATERIAL AS REQUIRED TO ACHIEVE THE RESPECTIVE FIRE-RESISTANCE RATING AND SMOKE STOPPAGE. SEE SPECIFICATION SECTION 078413.
- COORDINATE WITH MECHANICAL AND ELECTRICAL CONTRACTORS THE SIZE AND LOCATION OF EQUIPMENT PADS SHOWN ON PLANS.
- FIRE-RESISTANCE-RATED ENCLOSURES AROUND ALL STEEL COLUMNS SHALL BE CONTINUOUS FROM FLOOR TO UNDERSIDE OF FLOOR OR ROOF DECK ABOVE FOR EACH LEVEL.
- CONSTRUCTION DOCUMENTS ARE COMPLEMENTARY. SEE DRAWING FOR QUANTITIES AND LOCATION OF WORK. SEE SPECIFICATIONS FOR QUALITIES AND CONDITIONS OF WORK.
- WORK: ALL ASPECTS OF THE WORK AND ITEMS NOT SPECIFICALLY MENTIONED, BUT NECESSARY TO MAKE A COMPLETE WORKING INSTALLATION, SHALL BE INCLUDED AND INDICATED IN THE CONTRACTOR'S BID.
- NO ASBESTOS OR PCB CONTAINING MATERIALS SHALL BE USED ON THIS PROJECT.
- HORIZONTAL AND VERTICAL DIMENSIONS ARE MINIMUM DIMENSIONS. CLEARANCES ARE GIVEN TO FINISH SURFACES. GO TO VERIFY ALL CLEARANCES. NOTIFY ARCHITECT IN CASE OF DISCREPANCY.
- ALL INTERIOR CMU WALLS SHALL BE 8 INCHES NOMINAL THICKNESS, UNLESS NOTED OTHERWISE.
- WALL TYPES SHALL BE DESIGNATED ON FLOOR PLANS THUS: (XX X XX) SEE SHEET A8.1 FOR WALL TYPES. ALL INTERIOR PARTITIONS ARE WALL TYPE SA.3.20 UNLESS NOTED OTHERWISE.
- ALL MASONRY WALLS AND INTERIOR STUD WALLS SHALL EXTEND TO UNDERSIDE OF FLOOR OR ROOF DECK ABOVE UNLESS NOTED OTHERWISE. SEE REFLECTED CEILING PLAN NOTES.
- PROVISIONS SHALL BE MADE AT ALL FULL HEIGHT NON-BEARING WALLS FOR 1-INCH VERTICAL MOVEMENT OF THE BUILDING STRUCTURE WITHOUT TRANSFER OF COMPRESSIVE LOADS TO WALL. FILL IRREGULARITIES BETWEEN TOP OF WALL AND DECK ABOVE WITH MINERAL WOOL INSULATION OR FIRE STOPPING MATERIALS AS REQUIRED TO MEET FIRE RATING OF RESPECTIVE WALLS. SEE DETAILS ON SHEET XX.X.
- SEE STRUCTURAL DRAWINGS FOR BRACING OF NON-LOAD BEARING MASONRY WALLS.
- FURNISH AND INSTALL FIRE-TREATED WOOD BLOCKING OR METAL BACKING PLATE IN METAL STUD PARTITIONS FOR THE PROPER ANCHORAGE OF ALL WALL ATTACHED ITEMS. I.E. TOILET ACCESSORIES, CASEWORK, MILLWORK, WALL-MOUNTED FIXTURES, MARKER BOARDS, TACK BOARDS, DOOR STOPS, AUDIO VISUAL BRACKETS, AND OTHER WALL ATTACHED ITEMS.
- GYPSUM BOARD SURFACES SHALL BE ISOLATED WITH CONTROL JOINTS WHERE SHOWN ON DRAWINGS AND AS DESCRIBED IN THE SPECIFICATIONS.
- MASONRY CONTROL JOINTS (CJ) AND CONTROL JOINTS ABOVE (CA) SHALL BE LOCATED AS SHOWN ON THE FLOOR PLAN AND BUILDING ELEVATIONS, AND WHERE LARGE PLUMBING VENTS OR RISERS OCCUR IN SINGLE WYTHE MASONRY WALLS, AND WHERE MASONRY WALLS BEARING ON THE CONCRETE FLOOR SLAB ABUT MASONRY WALLS BEARING ON CONCRETE FOOTINGS OR AS INDICATED ON DRAWINGS.
- "MBD" AND "TBD" INDICATE MARKER BOARDS AND TACK BOARDS ON PLANS. THE LENGTH PRECEDES THE DESIGNATION (EXAMPLE 16 MBD). ALL BOARDS ARE 4'-0" TALL U.N.O. SEE WALL ELEVATIONS OR SPECIFICATIONS FOR MOUNTING HEIGHT.
- EXTEND FURRING CHANNELS AND GYPSUM BOARD UP 4 INCHES ABOVE FINISHED CEILING ON CMU WALLS.
- SCRIBE GYPSUM WALL BOARD OF WALLS AND PARTITIONS TO IRREGULARITIES OF DECK ABOVE. SEAL TIGHTLY AROUND ALL PENETRATIONS.
- SET ALL HINGE SIDE OF DOOR FRAMES 4" FROM ADJACENT WALLS OR FIXED CONSTRUCTION, UNO. NOTIFY ARCHITECT OF LOCATIONS LESS THAN 4"
- MARKERBOARDS / TACKBOARDS / FLAT PANEL DISPLAYS ARE TO BE CENTERED ON WALL U.N.O.

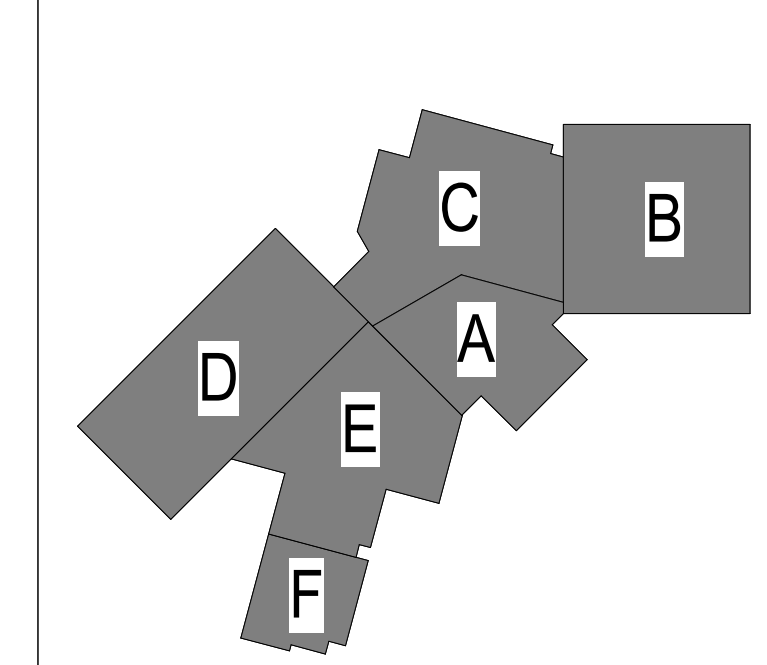
KEY NOTES

- PLAN SHEET NOTE 1
- PLAN SHEET NOTE 2
- PLAN SHEET NOTE 3

LEGEND

- ADMINISTRATION
- ADVANCED MANUFACTURING
- CIRCULATION
- CONSTRUCTION TRADES
- HEALTH SCIENCES
- LEARNING STUDIO
- NEW/INNOVATION
- OUTDOOR SPACE
- SUPPORT
- TECHNOLOGY
- TRANSPORTATION, DISTRIBUTION & LOGISTICS

KEY PLAN



OVERALL SECOND FLOOR PLAN
SCALE: 1" = 20'-0"

FOR REFERENCE

WIGHTMAN

BENTON HARBOR
269.927.0100

KALAMAZOO
269.327.3532

ALLEGAN
269.673.8465

ROYAL OAK
248.791.1371

www.gowightman.com

DLR GROUP

© DLR Group
303 WEST WALKER DRIVE, SUITE 600
CHICAGO, IL 60608
www.dlrgroup.com
312.781.1044

IMEG

1100 WARRENVILLE ROAD
SUITE 400W
NAPERVILLE, IL 60563
www.imegcorp.com
630.527.2320

STATE OF MICHIGAN
GEORGE M. KACAN
ARCHITECT
No. 130136813
LICENSED ARCHITECT

PROJECT NAME:
Career Connect Campus

CAREER CONNECT CAMPUS
3500 VANRICK DRIVE
KALAMAZOO, MI 49001

KALAMAZOO RESA
INSPIRING EDUCATIONAL EXCELLENCE

KALAMAZOO RESA
1819 EAST MILHAM ROAD
PORTAGE, MI 49002

Issued for Bid	12/20/2022
3 Addendum 4	01/26/2023
4 Issued for Plan Review	01/27/2023
4 Bulletin 5	03/22/2023
20 Bulletin 14	09/15/2023
Confirmed Set	11/30/2023

REVISIONS

THE REPRODUCTION, COPYING OR OTHER USE OF THIS DRAWING WITHOUT WRITTEN CONSENT IS PROHIBITED. © 2022 WIGHTMAN & ASSOCIATES, INC.

DATE: 20 DEC 22
SCALE: As Indicated

OVERALL SECOND FLOOR

JOB NO: 214175
A1.2